






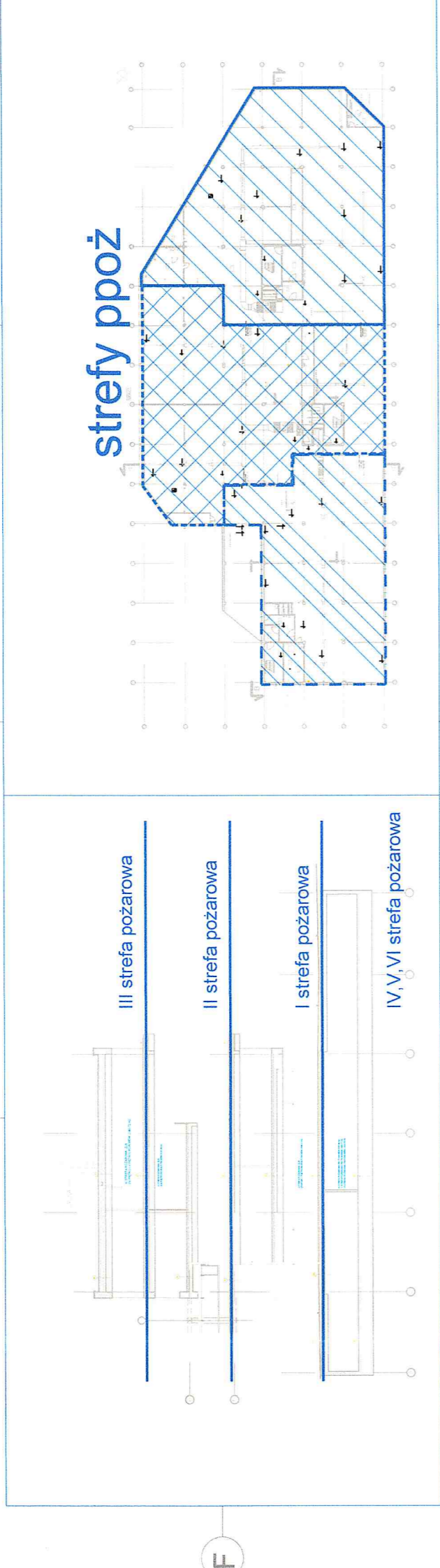
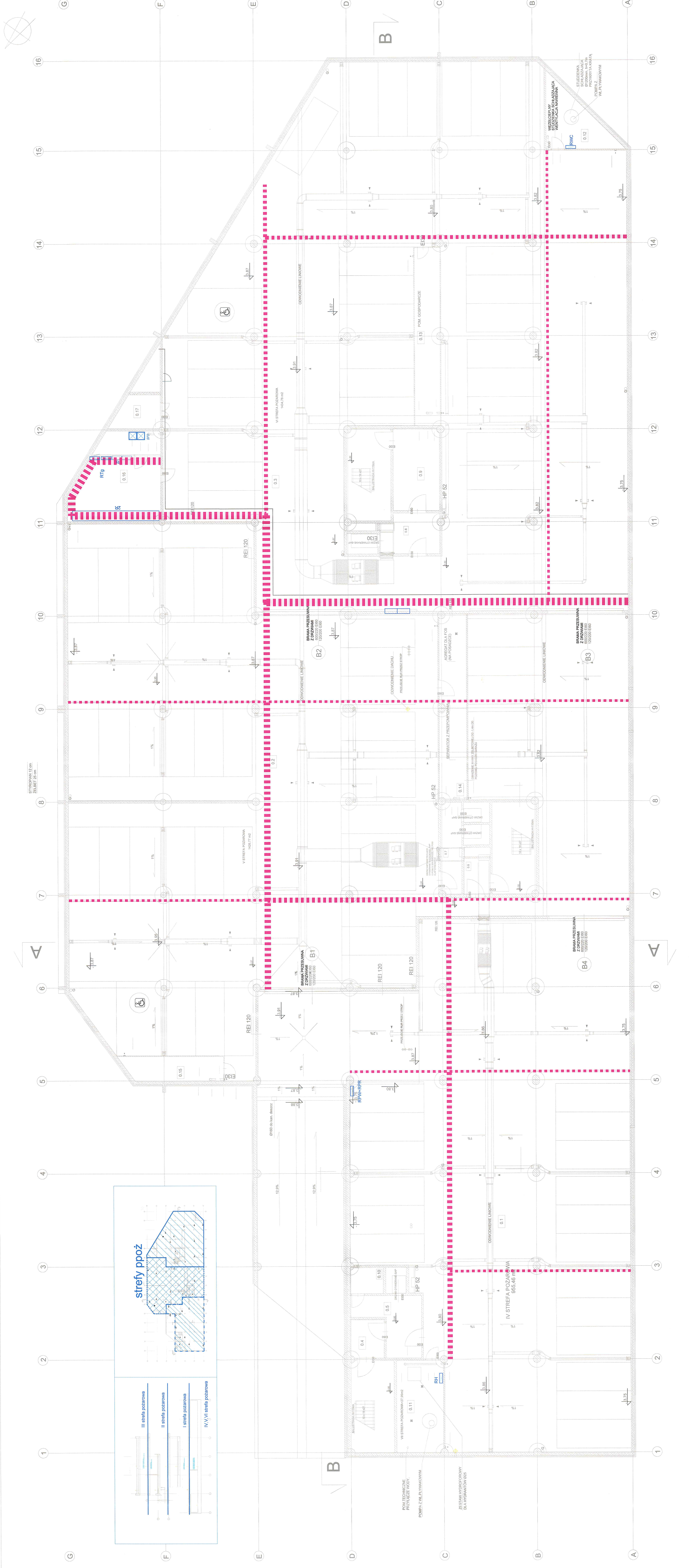



-  Koryto kablowe K600
-  Koryto kablowe K500
-  Koryto kablowe K400
-  Koryto kablowe K300
-  Koryto kablowe K200
-  Koryto kablowe K100
-  Trasa kabla SN 15kV



**GDANSKI PARK NAUKOWO-TECHNOLOGICZNY**  
ETAP III - BUDYNKI A I B  
ul. Władysława IV 9, 81-713 Sopot  
tel.: +48 58 555 55 55, fax: +48 58 555 91 11  
www.gpnpark.pl



**GEL**  
PROJEKT POWYKONAWCZY ELEKTRYCZNA

Projektant: **PROJEKTOWALNIA**  
Wykonawca: **PROJEKTOWALNIA**

Skala: 1:100

Wzrost: 1,70m

Temperatura: 20°C

Waga: 1,20kg

Objętość: 0,12m³

Prędkość: 0,12m/s

Wzrost: 1,70m

Temperatura: 20°C

Waga: 1,20kg

Objętość: 0,12m³

Prędkość: 0,12m/s

**BUDYNEK B**

Projekt: **GDANSKI PARK NAUKOWO-TECHNOLOGICZNY**  
ETAP III - BUDYNKI A I B

Nazwa rysunku: Plan WZJ i osi koryt kablowych - poziom parter

GPNT III GEL E B I - 1 5-4-25 I - PW